



FROM COMMUNITY BARRIERS TO REAL OPPORTUNITIES

Integrated Community-Based Programmes in Eastern Uganda

Supported by



Implemented by The Umbrella of Hope Foundation



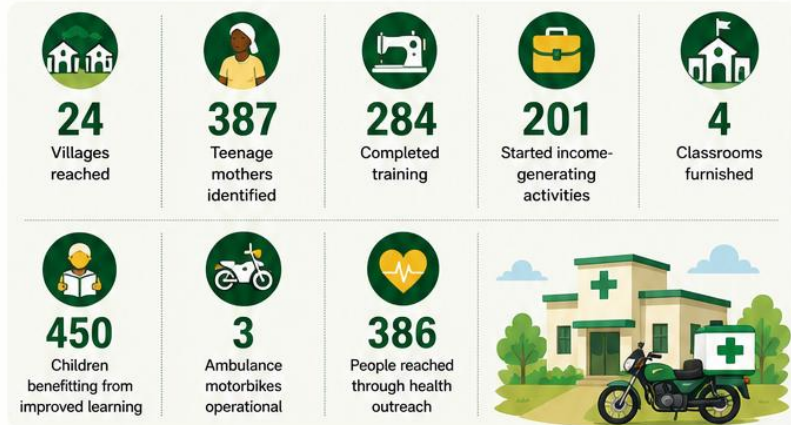
SUMMARY

In 2025, The Umbrella of Hope Foundation implemented community-based programmes across vocational training, education, maternal health, and child development.

By shifting from centralized delivery to community-based approaches, we reached vulnerable groups—especially teenage mothers—who were previously excluded due to distance, cost, and childcare responsibilities.

This approach significantly improved access, participation, and outcomes across all interventions.

IMPACT AT A GLANCE



IMPACT IN NUMBERS

ITEM	ACHIEVED
Villages reached	24
Teenage mothers enrolled	312
Completed training	284
Businesses started	201
Classrooms furnished	4
Children supported	450
Ambulance motorbikes	3
Health outreach participants	386



WHAT YOUR SUPPORT MADE POSSIBLE



VOCATIONAL TRAINING & ECONOMIC EMPOWERMENT	EDUCATION & SCHOOL DEVELOPMENT	MATERNAL HEALTH & EMERGENCY RESPONSE	CHILD DEVELOPMENT & WELLBEING	COMMUNITY ENGAGEMENT
<ul style="list-style-type: none"> Skills for self-reliance Hands-on training in tailoring & crafts Building confidence & financial independence 	<ul style="list-style-type: none"> 4 classrooms furnished Improved learning environment Reduced dropout risk Continuous education pathway 	<ul style="list-style-type: none"> 3 ambulance motorbikes in operation Faster emergency referrals Strengthened referral systems Saving mothers' lives 	<ul style="list-style-type: none"> Safe playground established Improved child wellbeing Increased school attendance 	<ul style="list-style-type: none"> 20+ community volunteers engaged Awareness on education & health Stronger community ownership

VOICES FROM THE COMMUNITY

"Before, I could not access training. Now I have skills, I earn, and I can take care of my child."
— Teenage mother

"Children now study in a better environment. They are happy and no longer drop out."
— Community member

SUSTAINABILITY

These programmes are sustained through community ownership, local leadership structures, and integration with ongoing TUH programmes.

This approach ensures long-term impact beyond initial implementation.

OUR GRATITUDE

Your support did not only deliver services — it created opportunity, restored dignity, and changed lives.

- You created opportunity.
- You restored dignity.
- You changed lives.